



ST. ANNE RAIL EXPANSION

CONNECTING ST. ANNE GRAIN TO AMERICA'S FOOD SUPPLY



FASTER RECEIVING
100+ Loads/Hr



RAIL LOADING CAPACITY
120 Cars



INCREASED DRYING CAPACITY
10k Bu/Hr

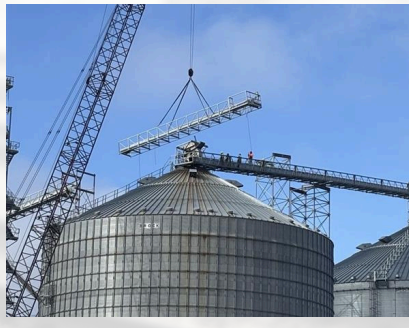


ADDITIONAL SPACE
1.2 Million Bushels

FS GRAIN is fully owned by your local FS cooperative, Heritage FS, and other northern Illinois FS coops like them: AgView FS, Conserv FS, and GRAINCO FS, along with GROWMARK.

FS GRAIN operates 18 locations across northern Illinois and is excited to announce the expansion of our St. Anne location.

The St. Anne expansion allows larger 100+ car trains and more storage, so grain can move out faster and more efficiently. Today, limited rail capacity forces much of the area's grain to be trucked longer distances after harvest. One railcar can hold over 4 semi truck loads, sending more local grain to national feed and livestock markets with fewer trucks on the road.



You can find bids for all of our locations on the web at WWW.FSGRAIN.COM, in our app, or sign up for daily location emails and updates by contacting us.

OUR FACILITY MAY BE CHANGING, BUT YOU'LL STILL BE SERVED BY THE SAME FAMILIAR FS GRAIN TEAM YOU KNOW AND TRUST.



Britt Warmoth
Market Strategy Advisor



Cindi Faford-Westphal
Grain Consultant



Angie Arseneau
Grain Consultant



Ben Llamas
Facility Manager

ELEVATING PEOPLE AND COMMUNITIES... TODAY AND FOR FUTURE GENERATIONS.



START TO **FINISH**

WWW.FSGRAIN.COM

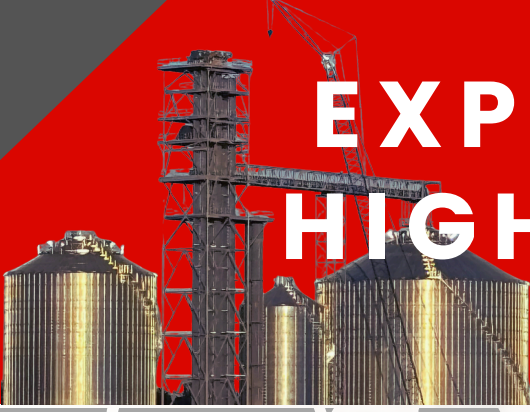
815-427-8171

151 E. STATION STREET





EXPANSION HIGHLIGHTS

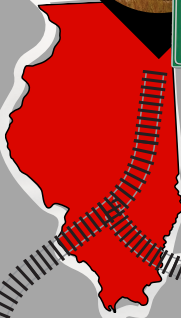


Our additional load out capacity will allow us to reach more markets in the southeast and southwest United States and Mexico.

These markets primarily serve the hog, cattle and chicken industries supplying quality meats to some of your favorite brands... Pilgrims Pride, Chik-Fil-A, Tyson, and Buffalo Wild Wings, just to name a few.



ST ANNE



One railcar can hold over 4 semi truck loads, sending more local grain to national feed and livestock markets with fewer trucks on the road



START TO FINISH